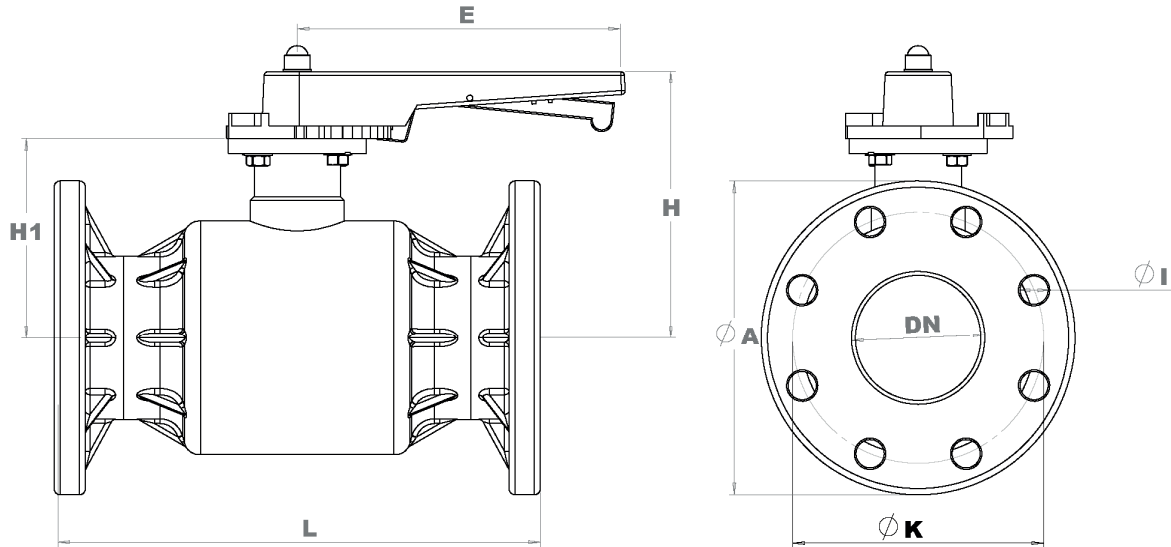




Features :	Monobloc ball valve, 2 ways, PN10 flanges connection ends			
Body material	PPH	PPG	PEHD	PVDF
Ball seats	Pure PTFE			
Sealing	EPDM, FKM or FEP			
Temperature	-10°C to + 80°C	-10°C to + 100°C	-30°C to + 60°C	-30°C to + 120°C
Sizes	DN65 to DN100			
Connection ends	Flanges PN10/16 Connection according to DIN EN 1092-1 or ANSI ASME B16.1			
Face to face dimensions	Face to face according to DIN EN 558 -1 (ISO/DIN2501) or ANSI ASME b16.10 class150			
Operation	ON/OFF position handle, optional with pneumatic or electric actuator			
Optional	Drive extension, limit-switch box, lockable handle, manual handle with spring return			

Some other types are available with buttwelding, as well as in electro-conductive material.

Technische Änderungen vorbehalten • Construction data remain subject to change.
 Alle Angaben ohne Gewähr. • No liability is accepted for printing errors and amendments.
 Stand: 07/2017



DN (mm)	Ød (mm)	G (inches)	PN (bar) to 20°C	Value Kv (Δp=1 bar) (l/min)	Value Kv (Δp=1 bar) (m³/h)	Operating torque N/m	ØA (mm) DIN	H (mm)	E (mm)	Tightening torque N/m
65	75	2"½	10	5000	300	18	185	131	215	45
80	90	3"	10	7000	420	18	200	131	215	45
100	110	4"	10	7000	420	18	225	131	215	45

**Flanges PN10/16,
DIN face to face
dimensions**

**Flanges ANSI B16.1,
DIN face to face
dimensions**

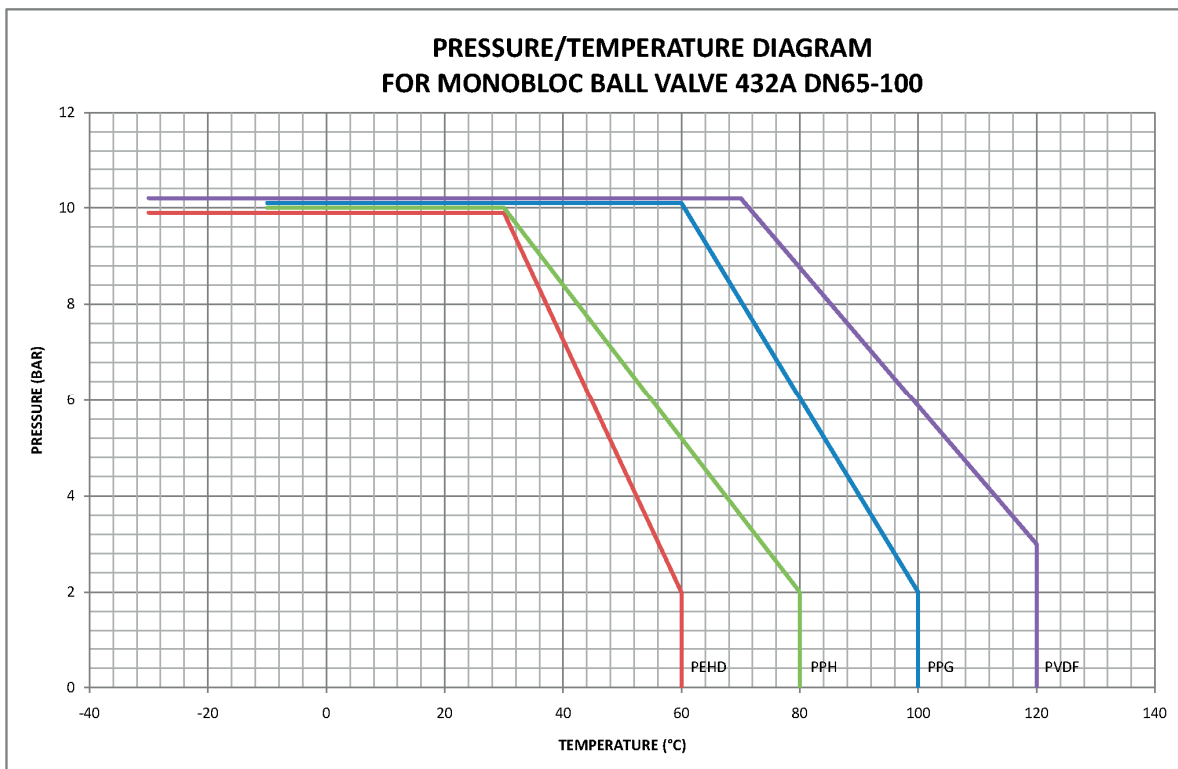
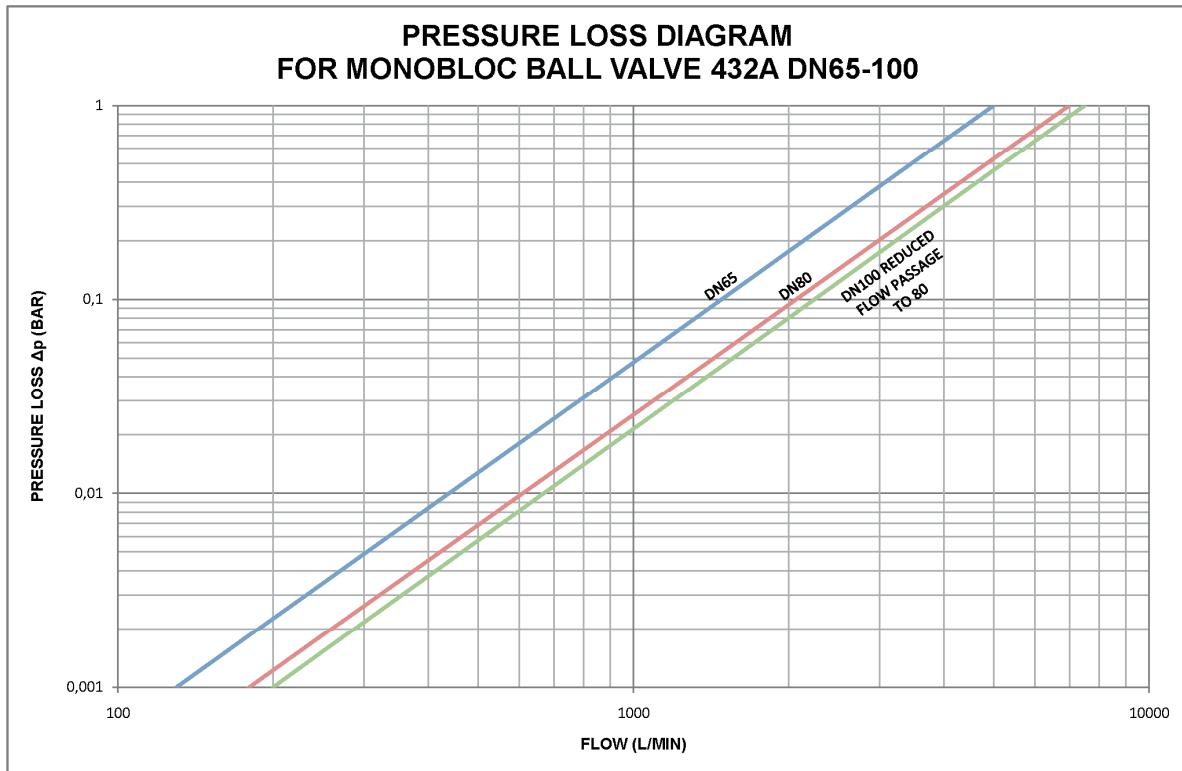
**Flanges ANSI B16.1,
ANSI 150 face to face
dimensions**

DN (mm)	Ød (mm)	G (inches)	L (mm) DIN	ØI (mm) DIN	ØK (mm) DIN	L (mm) DIN	ØI (mm) DIN	ØK (mm) DIN	L (mm) DIN	ØI (mm) DIN	ØK (mm) DIN
65	75	2"½	290	18x4	145	290	19x4	140	190	19x4	140
80	90	3"	310	18x8	160	310	19x4	152	203	19x4	152
100	110	4"	350	18x8	180	350	19x8	190	229	19x8	190

Technische Änderungen vorbehalten • Construction data remain subject to change.
 Alle Angaben ohne Gewähr • No liability is accepted for printing errors and amendments.
 Stand: 07/2017

FRANK GmbH

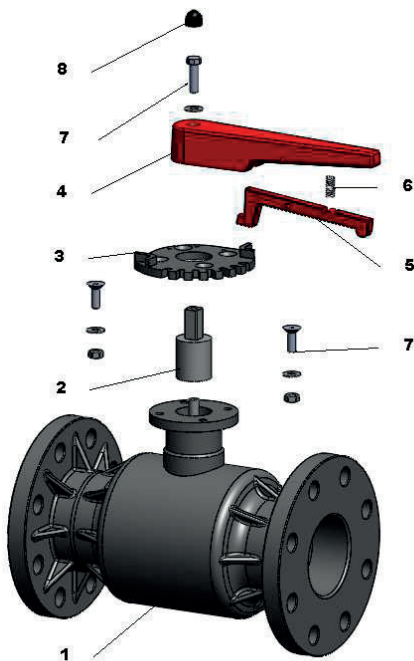
Starkenburgerstraße 1 • D-64546 Mörfelden • Telefon +49 (0) 6105 / 4085-0 • Telefax +49 (0) 6105 / 4085-270 • www.frank-gmbh.de



Technische Änderungen vorbehalten • Construction data remain subject to change.
 Alle Angaben ohne Gewähr • No liability is accepted for printing errors and amendments.
 Stand: 07/2017

FRANK GmbH

Starkenburgerstraße 1 • D-64546 Mörfelden • Telefon +49 (0) 6105 / 4085-0 • Telefax +49 (0) 6105 / 4085-270 • www.frank-gmbh.de



N°	Description	Nbr	Material
1	Body	1	PPG, PPH, PEHD, PVDF
	Ball	1	PPG, PPH, PEHD, PVDF
	Stem	1	PPG, PPH, PEHD, PVDF + A2
	Ball seat	2	PTFE
	O-rings	1	EPDM, FKM, FEP
	O-ring stem	1	EPDM, FKM, FEP
2	Drive socket	1	Al
3	Toothed plate	1	PPG
4	Handle	1	PST
5	Trigger		PST
6	Spring	1	A2
7	Bolting	1	A2
8	Cap	1	PE

DISASSEMBLING AND ASSEMBLING INSTRUCTION

The operation of assembling and disassembling of the valve must be carried out in the cleanest environment in order to avoid all foreign substance.

DISASSEMBLING INSTRUCTION

- 1 - Remove the cap on the head of the valve, unscrew the nut, remove the washer, remove the handle.
- 2 - Remove the socket, be careful not to damage the bearing.

INSTALLATION INSTRUCTION

Proceed in the same way as disassembly instructions, but reverse.

SERVICE - MAINTENANCE

This type of valve requires no maintenance. However, in service, periodically perform a visual check of the valve, the stuffing box and inspect its operation if it is not much used the tightening torques of the different elements.

During the annual shutdown of the installation, make a methodical verification valve and change if necessary, worn parts. On the other hand, pay attention to the good condition of the spare parts. They must not show signs of aging.

GREASE VALVE

If you wish to lubricate the valve, it is advised to use special silicon grease for valves when it is compatible with the fluid.

Never use grease, mineral oil or petrolatum.